

## PE/N-support (01356)



The picture may show a similar product.

### Description

Part No.: **01356 000**

PE/N-support

2-pole, indiv. mountable

for busbars 12, 15, 20, 25, 30 x 5, 10

### System

60Classic

### Advantages of the product

With external screw holes, can also be used as centre support

5 / 10mm depth balancing possible, N-PE connection easy to make

**Product group** 06

**Subgroup** 06

**pack size** 10

**EAN** 4021267013561

ECLASS 6.1 27400607  
ECLASS 7.1 27400607  
ETIM 4.0 EC001166  
ETIM 5.0 EC001166

## Approvals

### Standards

IEC 61439-1:2020  
UL 508

### Approvals

UL



for UL feeder circuits >250V

type number: S356-L

UL file: E123577, UL category (for USA): NMTR <https://www.ul.com>

UL file: E123577, UL category (for Canada): NMTR7 <https://www.ul.com>

CCC approval: no certification required

## Technical data

### Details IEC

#### Standards

IEC 61439-1:2020

#### Electrical data IEC

rated voltage (IEC) AC: 690 V

rated frequency (IEC): 50 / 60 Hz

rated isolation voltage  $U_i$  AC: 1000 V

rated surge voltage  $U_{imp}$ : 6 kV

power dissipation of the article:

The power dissipation at a typical load of 80 % results to 0.0 W.

(The power dissipation at full load would be 0.0 W.)

### Supplementary data IEC

The following values have been verified with tests under certain conditions. Please ask Wöhner for this conditions before designing your panel.

max. permitted voltage (IEC) DC: 1500 V

UL :

SCCR = 14 kA (Schienenträger im Abstand von 400 mm)

### Details UL

#### Standards

UL 508

for UL feeder circuits >250V

### Electrical data UL

rated voltage (UL) AC: 600 V

rated frequency (UL): 50 / 60 Hz

### Mechanical data

W x H x D: 20 x 164 x 50

weight: 9.5 kg/100

poles: 2-pole

for busbars: 12, 15, 20, 25, 30 x 5, 10

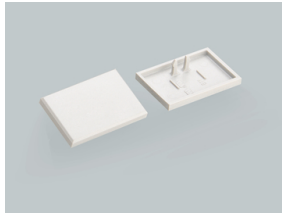
## Application notes

The insulation performance of the article depends on the installation conditions.

for UL feeder circuits >250V

# Accessories

covers



**01325 000**

end cover

for busbar support 01356 and 01601

<https://pim.woehner.de/EN/INT/1000043831>